



MANUFACTURING COMPANY, INC.

Newsletter No. 04/1 JANUARY

"Keeping Friends and Customers Informed"



We are proud to introduce our newest all metal burner, the Model MR-12.



**SPECIAL QUICK COOLING
AND DURABLE**

Ceramic tile is used.
(It is **not** a fiber matrix!)

Model QC-12 PREMIX BURNER

Unique, quick-cooling ceramic refractory tile has thousands of tiny holes through which gas passes. The gas ignites as it exits these holes and produces no visible flame.



Photo of section of ceramic refractory grid.



**METAL REFRACTORY GAS-FIRED
INFRARED BURNER**

Also Quick Cooling

Model MR-12 PREMIX BURNER

Unique and complex metal refractory grid.

- Durable metal for increased strength
- Increased flash resistance due to the porosity makes it ideal for use in air/propane premix systems

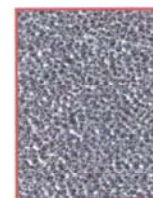


Photo of section of metal refractory grid

COMMON FEATURES

- Develops burner face temperature to 1700°F with turndown ratio of 4 to 1.
- Heat input 20,4000 BTU/section/hr. @ 3" w.c.m.p. manifold pressure.
- Burner face provides a wide radiating area of 48.5 sq.in./section.
- Excellent resistance to water and thermal shock damage.
- Sections can be attached to a manifold horizontally or vertically using our patented three-piece union connector.
- Durable gray iron casting eliminates the need for a cooling plenum.
- Burner arrays can be installed in any position.
- Burners are simple to install on new or retrofit systems.

This burner is identical to the QC-12 except for the burner face material. The two ceramic tiles of the QC-12 are replaced with one unique metal refractory grid. The metal refractory has excellent thermal shock resistance and is much less likely to be damaged if impacted. Another benefit is its built in flame arrester property which is especially beneficial for use with propane/air.

The QC-12 and the MR-12 burner are virtually interchangeable as they have the same operating parameters. Some customers have even successfully put them both on the same manifold.

Red-Ray Manufacturing Company, Inc.
P.O. Box 359 • 318 Cliff Lane
Cliffside Park, NJ 07010

Tel: 201-943-1000 Fax: 201-943-9178
email: burners@Red-Ray.com

www.Red-Ray.com

Manufacturers of Gas-Fired Infra-Red Radiant Process Burners for Industrial Use